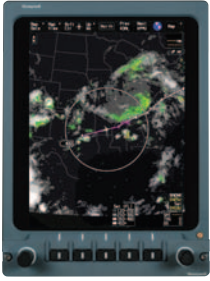


Advanced display without the downtime

Primus Elite™ — The high-definition flight deck upgrade.



DU-875 – Graphical uplink weather



DU-875 – Electronic charts

Designed for Primus 1000/2000/2000XP, SPZ-8400/8500 and selected SPZ-8000 series avionics systems.

The Primus Elite flight deck retrofit delivers the most sophisticated and user friendly display upgrade available today, featuring powerful graphics, advanced features and the improved clarity of liquid crystal display (LCD) technology. Safety enhancements include XM® graphical weather, Jeppesen electronic charts and maps, and video display capability, all enabled through a cursor control interface.

Highly reliable LCDs replace your existing CRT (cathode ray tube) displays and add graphical capability to your flight deck, but without the downtime, expense or additional pilot training needed with a traditional full cockpit replacement.

Find Out More

To learn more about Honeywell Primus Elite, please visit www.honeywellprimuselite.com

Honeywell Aerospace

1944 E. Sky Harbor Circle
Phoenix, AZ 85034

U.S. Toll Free: 1.800.601.3099

International Tel: 602.365.3099

EMEA Toll Free: 00.800.601.3099

EMEA Direct Dial: 420.234.625.500

aerospace.honeywell.com

Greater passenger comfort enhanced situational awareness and opportunities to grow

One of a pilot's primary responsibilities is to ensure passenger comfort – and the smoothest ride possible. The Primus Elite flight deck incorporates advanced weather solutions via XM® graphical weather, enabling better route planning and weather avoidance. Primus Elite also significantly enhances situational awareness within the often congested terminal area. By providing the electronic display of charts and maps with geo-referenced aircraft positioning in the pilots primary field of view, Primus Elite eliminates the need for pilots to have to alter their scan to gather critical information.

The Primus Elite flight deck upgrade also makes possible growth capabilities for future display requirements such as ADS-B In.

Increase efficiency and reliability with Primus Elite

Honeywell understands that operational efficiencies and safety are not mutually exclusive. That's why the Primus Elite flight deck upgrade is designed to not merely add aircraft value, but also to increase the safety, efficiency and reliability of your aircraft at the same time.

Improved Passenger Safety and Comfort

- Electronic charts and maps with geo-referenced aircraft positioning
- XM® graphical weather
- Video display capabilities

Reduced Cost of Ownership

- 2x display system reliability
- Paperless terminal-area charts and maps
- Maintains current display formats
- No additional pilot or maintenance training required
- Installed weight savings
- Cooling requirements diminished
- Honeywell Avionics Protection Plan (HAPP) savings

Advanced Features Upgrade (coming late 2015):

- Integrated Primary Flight Display (PFD) with Synthetic Vision System (SVS)
- XM® Meteorological Aviation Report (METAR) & Terminal Area Forecast (TAF) added to Enhanced Map
- Traffic Collision Avoidance System (TCAS) flight awareness layer added to Enhanced Map
- Faster and easier on-wing field loading of software and databases

Worldwide Customer Support



DU-885 – Integrated PFD with SVS



DU-885 – METAR overlay on Enhanced Map

Honeywell's avionics are based on proven technology and provide exceptionally high reliability and simplified maintenance. Our product support services include regularly scheduled maintenance and pilot training courses. When service is needed, our global network of customer support engineers and service centers are ready to respond quickly to your needs.

Honeywell