

## TPE331 Turboprop Engine

Possibilities of Performance. *Made Easy.*

### Advanced Performance



#### Outstanding Power

- Exceptional horsepower response
- Quicker throttle response for shorter takeoffs
- Faster climb and cruising speed
- Excellent power-to-weight ratio



#### Best-in-Class Fuel Economy

- Reduced fuel burn
- Improved fuel efficiency
- Larger operating range



#### Reduced Maintenance

- Higher reliability
- Longer maintenance intervals
- Lower overall operating costs

Fly fast and save fuel with Honeywell's TPE331 single-shaft turboprop engine. Designed to add capability, increase reliability and lower the cost of ownership for your aircraft, select the engine that provides proven performance and value – the Honeywell TPE331.

### Proven Expertise

**50**  
years



#### Dedicated Service

- Extensive small gas turbine engine design and support
- 13,700+ engines delivered
- 18 unique engine models with 106 configurations



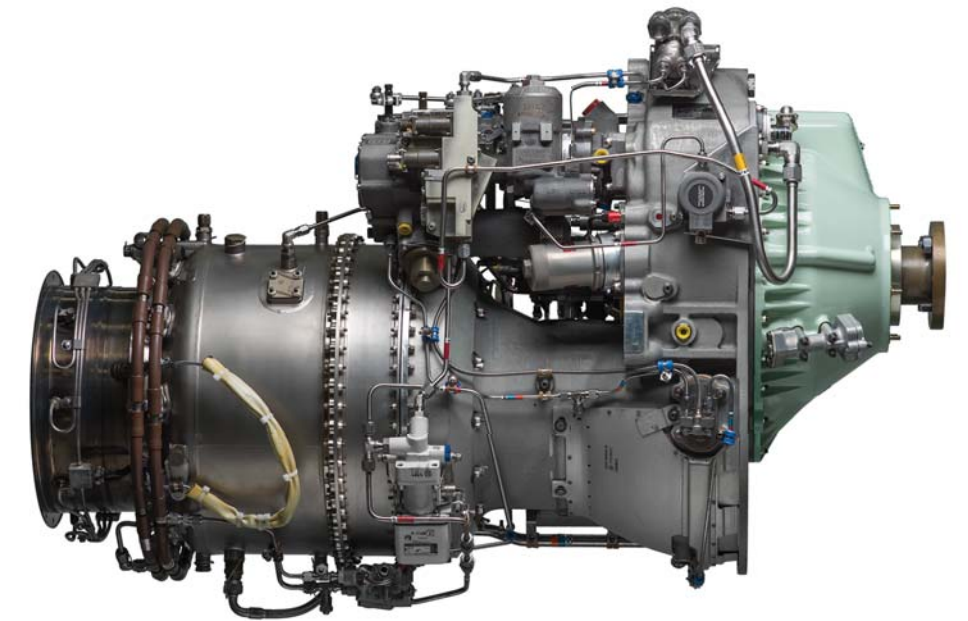
#### Demonstrated Reliability

- Extensive operational history
- 125 million+ hours of flight operation
- Proven performance in demanding conditions



#### Delivered Value

- Low cost of ownership
- Improved engine efficiency
- Safer and more reliable flight operation



### Engine Specifications

	TPE331-1	TPE331-2	TPE331-3	TPE331-5	TPE331-6	TPE331-8	TPE331-10	TPE331-11	TPE331-12	TPE331-14
<b>Thermodynamic Shaft Horsepower</b>	665	715	840	840	840	865	1020	1020	1160	1645-1920
<b>Flat Rate Torque Take Off</b>	665	715	840	776	750	715	940	1000	1100	1650
<b>Augmented* 5 Min Rating</b>			940					1100		
<b>Auxiliary Power Rating</b>							940 <sup>1</sup>		1100 <sup>2</sup>	1650 <sup>3,4</sup>
<b>Hot Section</b>	1800	1800	1800	1800	1800	1500/4500	2500/3500 <sup>**</sup>	2500/3500 <sup>**</sup>	2500/3500 <sup>**</sup>	4500
<b>Hot Section and Gearbox</b>	3600	3600	3600	3600	3600	3000				
<b>Overhaul Hours</b>	5400	5400	5400	5400	5400	6000	5000/7000 <sup>**</sup>	5000/7000 <sup>**</sup>	5000/7000 <sup>**</sup>	9000

\* Refers to water-methanol injection for a hot day power boost  
 \*\* Commercial operators only

<sup>1</sup> TPE331-10R APR rating provides 940 shp out to a 28C day at sea level  
<sup>2</sup> TPE331-12UAR APR rating provides 1100 shp out to a 23C day  
<sup>3</sup> TPE331-14GR/HR APR rating provides 1650 shp out to a 37C day at sea level  
<sup>4</sup> TPE331-14GR/HR engine with Augmentation (water methanol injection) provides 1650 shp out to a 53C day at sea level