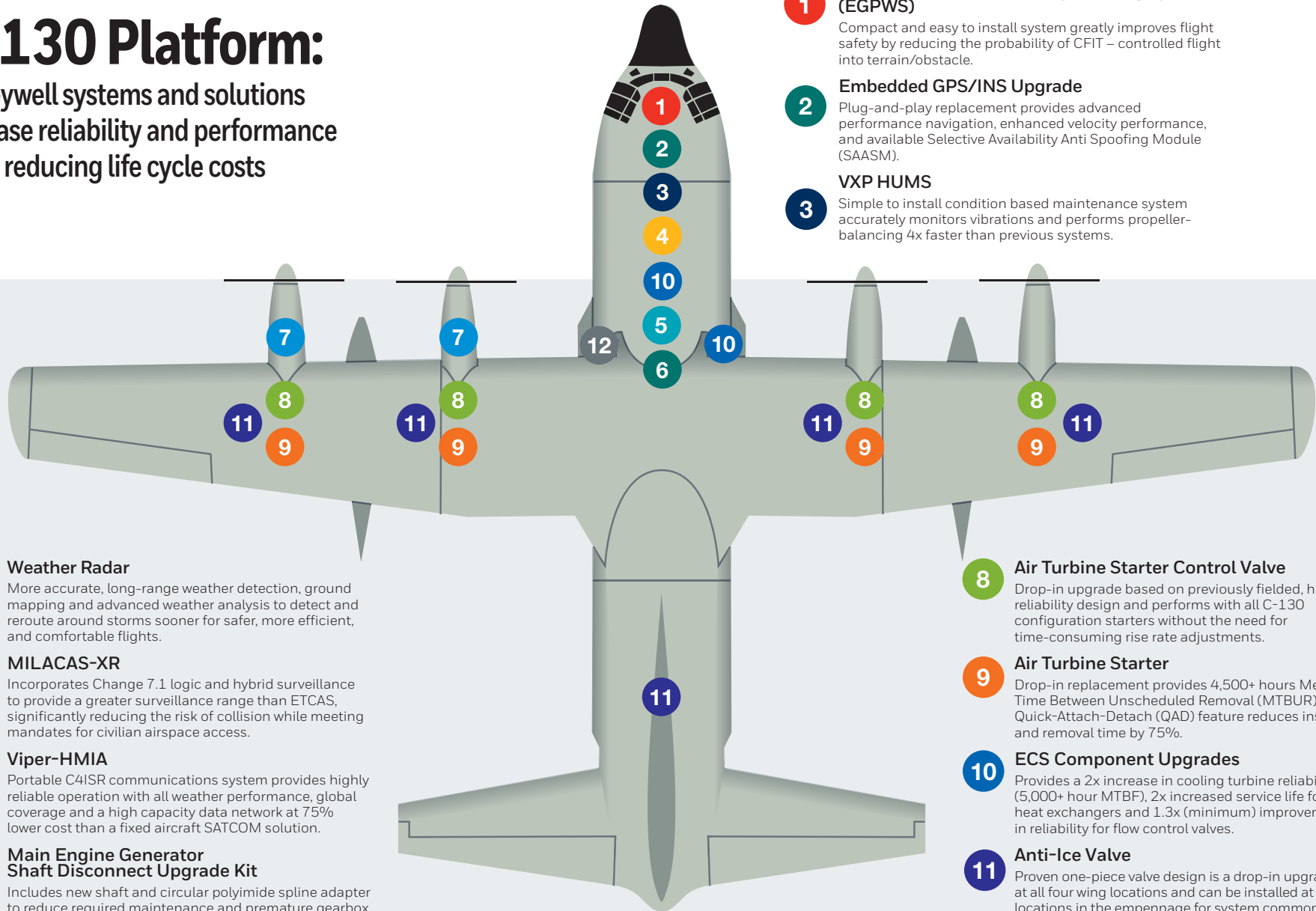


C-130 Platform:

Honeywell systems and solutions increase reliability and performance while reducing life cycle costs



1 Enhanced Ground Proximity Warning System (EGPWS)

Compact and easy to install system greatly improves flight safety by reducing the probability of CFIT – controlled flight into terrain/obstacle.

2 Embedded GPS/INS Upgrade

Plug-and-play replacement provides advanced performance navigation, enhanced velocity performance, and available Selective Availability Anti Spoofing Module (SAASM).

3 VXP HUMS

Simple to install condition based maintenance system accurately monitors vibrations and performs propeller-balancing 4x faster than previous systems.

4 Weather Radar

More accurate, long-range weather detection, ground mapping and advanced weather analysis to detect and reroute around storms sooner for safer, more efficient, and comfortable flights.

5 MILACAS-XR

Incorporates Change 7.1 logic and hybrid surveillance to provide a greater surveillance range than ETCAS, significantly reducing the risk of collision while meeting mandates for civilian airspace access.

6 Viper-HMIA

Portable C4ISR communications system provides highly reliable operation with all weather performance, global coverage and a high capacity data network at 75% lower cost than a fixed aircraft SATCOM solution.

7 Main Engine Generator Shaft Disconnect Upgrade Kit

Includes new shaft and circular polyimide spline adapter to reduce required maintenance and premature gearbox removal due to spline wear.

8 Air Turbine Starter Control Valve

Drop-in upgrade based on previously fielded, high reliability design and performs with all C-130 configuration starters without the need for time-consuming rise rate adjustments.

9 Air Turbine Starter

Drop-in replacement provides 4,500+ hours Mean Time Between Unscheduled Removal (MTBUR). Quick-Attach-Detach (QAD) feature reduces install and removal time by 75%.

10 ECS Component Upgrades

Provides a 2x increase in cooling turbine reliability (5,000+ hour MTBF), 2x increased service life for heat exchangers and 1.3x (minimum) improvement in reliability for flow control valves.

11 Anti-Ice Valve

Proven one-piece valve design is a drop-in upgrade at all four wing locations and can be installed at two locations in the empennage for system commonality.

12 Auxiliary Power Unit (APU)

Increases airflow for better ECS performance and expands generator capability from 20 to 40 KVA using longer-life materials for a 4x improvement in reliability.