

DU-875 LCD Display Unit Upgrades for All Platforms

This bulletin provides 2020 updated pricing and product information for the DU 875 LCD Display Upgrades to include the Bombardier Global Express, Falcon 900EX/C, Embraer Legacy 600/650, Cessna Citation X, Bombardier Lear 40/45, Dornier 328 and Citation 550/560



Sec 1.0	Introduction
Sec 2.0	DU-875 Features and Value Proposition
Sec 3.0	Configuration by Aircraft Platform
Sec 4.0	Honeywell Maintenance Service Plan (MSP) Avionics
Sec.5.0	Resources
Sec 6.0	Contact Information

Quick Reference Table

Effective Dates:	1/1/2020 through 12/31/2020
-------------------------	-----------------------------

DU-875 LCD Display Unit Upgrades All Platforms

1. Introduction

Maximize your options when deciding which DU-875 LCD display upgrade to choose when replacing or supporting DU-870 CRT displays on Primus 1000 / 2000 platforms. Honeywell is pleased to now offer multiple options to the aircraft operator:

- **DU-870 SPEX** - continue spare parts exchange (SPEX) support of existing DU-870 for DU-870 like exchange at \$25,000.00 list with one year standard SPEX warranty. DU-870 SPEX will end on Dec 31, 2020.
- **DU-875 One-for-One** drop-in replacement, form-fit-function replacement of DU-870 with DU-875, *either* (1) purchase new DU-875 with \$35K trade-in and one-year warranty *or* (2) replace DU-870 upon failure under our MSP (Maintenance Service Plan) Avionics warranty extension program. See Section 4 for MSP Avionics warranty extension program details.
- **Primus Elite Enhanced Features (PEEF)** – *either* (1) replace entire complement of DU-870s with new DU-875s with \$35K trade-in each and add full Primus Elite functionality *or* (2) enable Primus Elite functionality after all DU-870s are replaced via One-for-One drop-In replacement
- **Primus Elite Enhanced plus Advanced Features (PEEF + PEAFF)** – for those certified aircraft, Advanced Features now comes as standard with the Primus Elite
- **Primus Elite Advanced Features (PEAF)** – for those aircraft with Primus Elite Enhanced Features that have a PEAFF certification available, add the PE Advanced Features via software to the DU-875

The following table depicts the options above available today* by aircraft platform. More certifications (both FAA and EASA) are underway to complete in 2020.

	Global Express	Falcon 900EX/C	Legacy 600 / 650	Citation X	Lear 40/45	Citation 550/560	Dornier 328
SPEX	●	●	●	●	●	●	●
One-for-One	●	●	●	●	●	●	●
PEEF	●	●	●	●	●	○	●
PEAF	●	●	●	○	○	-	●

Table 1-1

*Note: Solid green circle indicates either FAA or EASA cert (or both) are available now. Check the cert tables for each platform in Section 3 for complete information. Open green circle indicates FAA and EASA certifications are underway. Dash means no cert is currently planned.

2. DU-875 Features and Value Proposition

2.1 Drop-In Replacement DU-870 to DU-875 Replacement

For operators wanting a lower-cost, building block approach to Primus Elite and solve DU-870 obsolescence today, the DU-875 drop-in replacement upgrade option is available. Honeywell provides a simple “plug and play” DU-875 replacement as shown below. The DU-875 can be installed quickly and easily with the same connector and no new wiring.

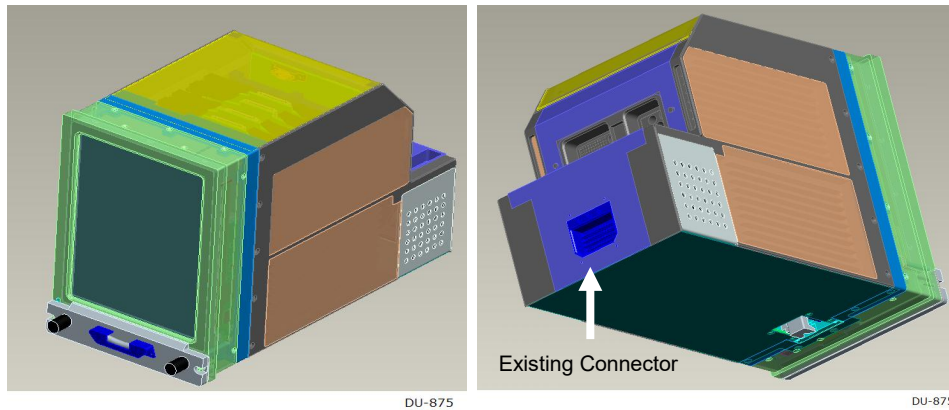


Figure 2-1

Key Drop-In Replacement DU-875 Value Contributors

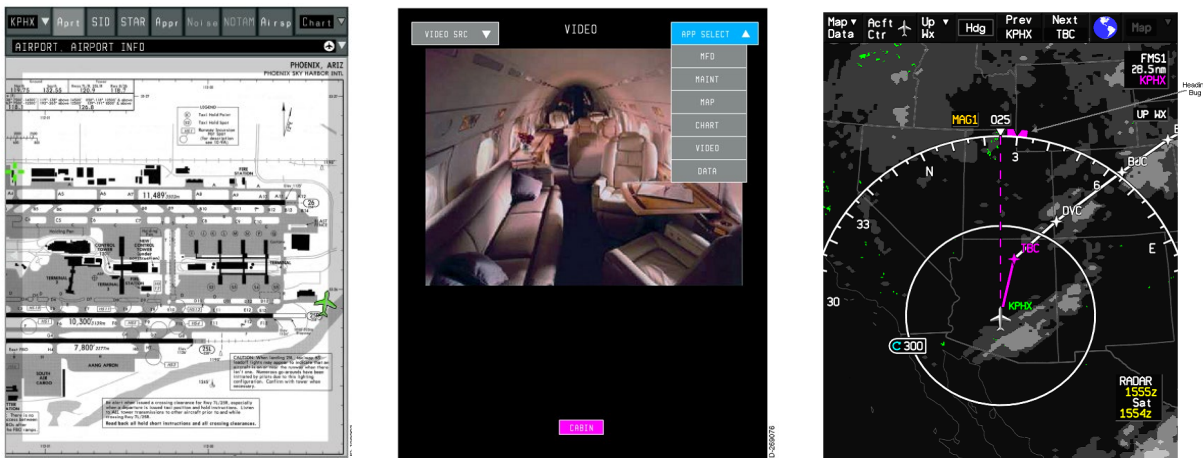
- **Low risk upgrade – ends obsolescence**
 - Aircraft down-time for upgrade can be done in a day once display is available
 - Cockpit will run quieter and cooler
- **No changes to operation or display format appearance**
 - Identical legacy display display formats, symbology and color sets
- **Reduced Cost of Ownership**
 - Higher reliability
 - ~2X for CRT to LCD
 - System weight reduction
 - Installed weight savings (~7lbs per DU)
 - Existing CRT cooling system not required
 - No pilot training due to retention of current display formats, symbology and color sets
 - OEM one-year warranty on DU-875s
 - Reduction in annual Maintenance Service Plan (MSP) Avionics cost
- **MSP Avionics coverage available for DU-870 with unlike exchange of DU-875 upon failure**
- **Growth to full Primus Elite and PEAf**

2.2 Primus Elite Enhanced Features (PEEF)

2.2.1 Overview

The upgrade to a full Primus Elite flight deck upgrade delivers new display features and user-friendly interface to the Primus 1000 / 2000 avionics system. Primus Elite features powerful graphics, advanced features and the improved clarity of Liquid Crystal Display (LCD) technology. Improved situational awareness capabilities and safety enhancements include the electronic display of Jeppesen charts and maps, XM® graphical weather overlays, and video inputs, all enabled through a cursor control interface. The LCD displays also incorporate internal computing power allowing operators to take advantage of future technologies previously only available to new aircraft. All this comes without the excessive downtime, expense or additional pilot training required with a lesser, non-Honeywell display solution.

Honeywell Primus Elite, the display upgrade *Flying* magazine named as its choice in retrofit flat-panel solutions, is available now for most Primus 1000 and Primus 2000 aircraft.



Primus Elite— Your customers' next step toward increased efficiency and reliability!

Key Primus Elite™ Value Contributors

- **Low risk upgrade – ends obsolescence**
 - Aircraft down-time for upgrade in most cases is ten (10) working days
- **Improved safety**
 - Enhanced Situational Awareness through intuitive display of information
 - Electronic display of Charts & Maps
 - Optional XM® graphical weather overlay on Moving Map
 - Video display capability
 - Identical legacy display formats, symbology and color sets
- **Reduced Cost of Ownership**
 - Higher reliability
 - ~2X for CRT to LCD

- System weight reduction
 - Installed weight savings (~7 pounds per DU)
 - Existing CRT cooling system not required
 - Database file server integrated in DU supports Terminal Approach Charts and Maps paperless solution
- Minimal pilot training due to retention of current display formats, symbology and color sets
- OEM one-year warranty on DUs and other new Honeywell equipment installed with Primus Elite upgrade
- Significant Reduction in the Honeywell MSP Avionics annual pricing during and after New DU warranty period with new five-year agreement
 - First year FREE MSP Avionics for coverage of all Honeywell avionics
 - Second and third year \$10,000 reduction in contract price
 - Fourth year and beyond, will be calculated using regular contract pricing but the new higher reliability LCD DUs will continue to provide a price incentive over the same contract calculated using the older CRT's.
- Reduced Maintenance
 - Periodic task of changing cooling filters eliminated
- *Growth to PEAf and Synthetic Vision Display (SVS)*

2.2.2 Primus Elite Charts Display

The primary purpose of the chart function is for viewing Jeppesen terminal charts on the multifunction display (MFD). An example of a typical chart display provided by this function is shown in Figure 2-2. The Chart application displays:

- Airport Charts
- Standard Instrument Departure (SIDs) Charts
- Standard Terminal Arrival (STARs) Charts
- Approach Charts
- NOISE Charts
- Notices To Airman (NOTAMs)
- Air Space Restrictions

A displayed chart can also be split, Figure 2-3, to show the header, profile, or minima information in a separate window from the chart with each window being able to be controlled independently. To further enhance pilot situational awareness, the “own ship position” (aircraft symbol) is displayed on all geo referenced charts and maps.

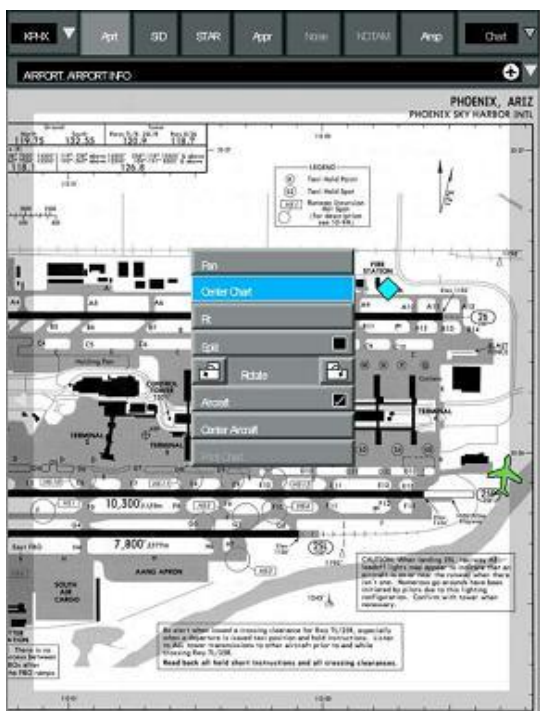


Figure 2-2 – Typical Chart Display



Figure 2-3 – Chart in Split View Mode

Jeppesen Charts & Maps are used for Primus Elite and are available by subscription via Honeywell/Jeppesen Integrated Navigation Data Service (INDS). INDS can be reached at:

- Within the US: +1-888-309-7555 - Option 1
- Outside the US: 1-303-328-6948 - Option 1
- On the World Wide Web: www.epicinds.com

Please contact INDS directly for Database Service and Subscription pricing details and ordering information, including current options for Charts & Maps packages.

2.2.3 Multi-Function Display – Moving Map

Primus Elite provides a Moving MAP feature that displays the current FMS flight plan on a geo-political map. The Moving MAP also provides the background data on which Uplink Weather data can be displayed.

The mapping features are provided via subscription service from INDS. See Table 3-2 - Database and Subscription Services, for subscription service details required to support the Moving MAP feature list.

The Moving Map is capable of displaying the following information:

- Uplinked XM graphical weather
- Geo-political boundaries
- Graphical representation of the active flight plan
- Magnetic heading
- Bearing pointers
- Navigational aids (NAVAIDS) VORs, NDBs etc...
- Airports
- HI and LO Airways
- Terminal and Special Use Airspace
- Miscellaneous annunciators

The map has three user selected display modes:

- North-up
- Heading-up
- Fixed

These display modes permit the user to show the previously mentioned information on a moving map in relation to the current aircraft position. Figures 2-4, 2-5 and 2-6; show examples of these three display modes.



Figure 2-4 – Uplinked Weather Map Display in North-Up Mode



Figure 2-5 – Uplinked Weather Map and Pull Down Menu

2.2.4 XM® Receiver and Antenna and Weather Information Network Service - Option

The XMD-157 adds a new dimension to datalink weather receivers by providing XM graphical Weather broadcast Service within Continental United States Please see Section 3.8 – XM Graphical Weather for further details on contacting Honeywell Go Direct for current subscription pricing and service information.

XM will provide the following weather view and weather products for display on Primus Elite:

Primary Views

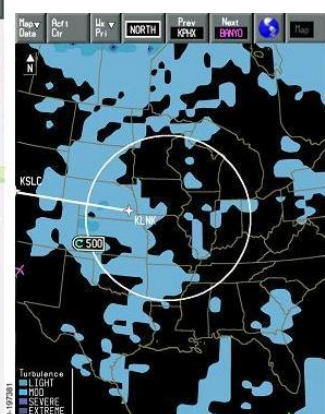
- US NexRad Radar
- Storm Tops (on top of NEXRAD) – example shown below
- Satellite Cloud Heights
- Winds Aloft – example shown below
- AIRMETs (Airmen Meteorological)
- SIGMETs (Significant Meteorology Advisory)
- Clear Air Turbulence (CAT) – example shown below
- Lightning
- Replay - closes the WX menu and begins showing a continuous loop of weather data (up to 2 hours of history in 20 minute increments)
- Legend - The uplink weather data legends, as shown in Figures 2-8, 2-10, 2-11, 2-12, 2-14, 2-16 and 2-18 permit the pilot to see the color codes associated with the weather data selected for display.

Secondary Views

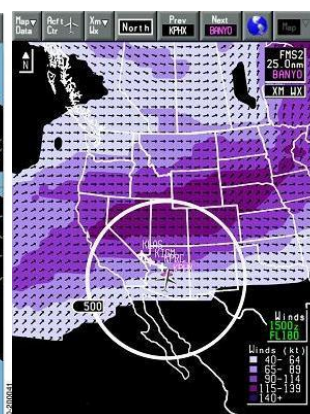
- Echo Tops – example shown below
- Vertical Winds View
- Vertical CAT (Clear Air Turbulence) View
- XM Coverage Area



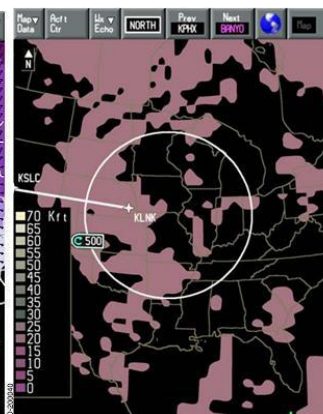
Storm Tops Display



Clear Air Turbulence Display



Winds Aloft Display



Echo Tops Display

2.3 Primus Elite Advanced Features (PEAF)

Primus Elite Advanced Features (PEAF) is a software upgrade to the Primus Elite display system described in Section 2.2. PEAFF provides three additional display features to Primus Epic. They are:

- Synthetic Vision System (SVS) – SVS replaces the current (legacy) symbology on the Primary Flight Display as shown in Figure 2-19. SVS significantly enhances situational awareness. This becomes especially valuable when flying an approach to an unfamiliar airport at night or in bad weather. SVS presents a clear picture in high resolution of the surrounding airspace in an intuitive, easy to interpret from the DU-875 computer-generated database.
- TCAS Overlay on Enhanced Moving Map Display – TCAS symbology is added to the Enhanced Moving Map Display as an additional overlay. This feature further enhances the flight crew’s situational awareness and leads to improved safety of flight
- METAR (Aviation Routine Weather Reports) and TAFs (Terminal Area Forecasts) are added to the available XM Weather Display selections on Enhanced Moving Map. These two features are in addition to the XM features with Primus Elite.



Figure 2-19: Comparison of original and PEAFF SVS symbology on the PFD

3. Aircraft Configuration

Configuration by Platform - Sections 3.1 through 3.7 detail the aircraft configuration by platform:

- DU 875 Drop-in Replacement
 - One-for-one “plug and play” upgrade
- Primus Elite Enhanced Features (PEEF)
 - For installations without an available PEAFC STC
- Primus Elite Combination (PEEF + PEAFC) **NEW**
 - For installations with an available PEAFC STC
- Primus Elite Advanced Features (PEAFC)
 - For installations with PEEF today, needing upgrade to PEAFC

Trade-In Credit for DU 870 in 2020 – Trade-in credit of \$35K per DU 870 remains the same for 2020.

3.1 Bombardier Global Express / G5000 / XRS

Drop-In			
Model	Description	Part Number	QTY
DU-875	8" x 7" LCD Display Unit	K9321060A13	1
DU-870	CRT Trade-In Credit		1

Table 3-1-1 – Global Express Drop-In

PEEF + PEAFC			
Model	Description	Part Number	QTY
DU-875AF	8" x 7" LCD Display Unit	K9321062A11	6
DU-870	CRT Trade-In Credit		6
TRAY	DU-875 Tray	4093594-906	6
DL-1000	Data Loader	G7228-01	1
MC-800	MFD Controller	G7280-703 or -701 (video)	2
SW Kit	Display Unit Modifications (6) to convert DU to K9321062A11	KS60001344-301	1
SR/SL	OPTION: SmartRunway/SmartLanding kit	6990273-300	1

Table 3-1-2 – Global Express Primus Elite Enhanced Features and Advanced Features (PEEF+PEAFC)

OIB 2020-XX DU-875 LCD Display Unit Upgrades - All Platforms

NOTES:

SmartRunway/SmartLanding kit is offered as an option. To receive the special priced upgrade kit must be purchased with the PEEF + PEAFF package as shown above in Table 3-1-2. Ask your Honeywell dealer about this promotion.

In order to upgrade to DU-875 with PEAFF features, aircraft must previously have been upgraded, or needs to upgrade to the Bombardier Batch 3.3 functionality with the FMS 6.1 software. IAC #1 and 2 must be at PN 7017300-61013 or higher. IAC #3 must be at PN 7017300-61013 or -62013 or higher.

An IM-803 configuration module change to PN 7014940-901 is needed to enable PEAFF features. Installer should consult with STC or service bulletin documentation for instructions on how to reconfigure.

PEAFF only			
Model	Description	Part Number	QTY
PEAFF	PEAFF modifications	See below	
DU-875AF	Display Unit Modifications (6) to convert DU to K9321062A11	KS60001344-301	1

Table 3-1-3 – Global Express Primus Elite Advanced Feature Modifications (PEAFF)

NOTES:

The DU-875 heatsink modification was incorporated into production in mid-2014 and is required for Primus Elite Advanced Features. There is no additional price for the mod when done in conjunction with PEAFF. DU-875 part number K9321060A12 REV 00 and K9321060A13 REV 00 are required to go to REV 01, which is the heatsink mod. The operator has two options to add the heatsink mod.

Option 1. Send existing units back to Honeywell for REV 01 modification and have them returned. This option allows operator to keep same serial-numbered units. Average turn time for mod is anticipated to be 30 days and there is no charge for the mod when ordering the PEAFF software upgrade.

Option 2. Request Honeywell SPEX rotatable units with heatsink as exchange for existing non-heatsink units. Operator sends existing cores back to Honeywell and requests SPEX unit replacements. This is available on a first-come, first-serve basis as there are limited units. Please use Honeywell SPEX to place your no-cost order and reference this bulletin. This is a no-charge service when ordering the PEAFF software upgrade.

For units already with heatsink, a software kit (SW Kit) is necessary for the conversion of all DU-875s installed in the aircraft and can be done “on-wing.” The software kit is supplied through an online portal managed by ScioTeq (Esterline), Belgium

In order to upgrade to DU-875 with PEAFF features, aircraft must previously have been upgraded, or needs to upgrade to the Bombardier Batch 3.3 functionality with the FMS 6.1 software. IAC #1 and 2 must be at PN 7017300-61013 or higher. IAC #3 must be at PN 7017300-61013 or -62013 or higher.

An IM-803 configuration module change to PN 7014940-901 is needed to enable PEAFF features. Installer should consult with STC or service bulletin documentation for instructions on how to reconfigure.

Global Express Supplemental Type Certificates

Global Express STCs	Dealer	STC Type	STC Number	Point of Contact	Remarks
Drop-In	Pentastar	FAA	ST04194CH	bbridson@pentastaraviation.com	
	Jet Aviation	EASA	10065511	directsales.bsl@jetaviation.ch	
	Jet Aviation	FAA	ST04268NY	directsales.bsl@jetaviation.ch	
PEEF	Bombardier	OEM SB		STCRTU@honeywell.com	
PEAF	Bombardier	FAA	ST00299BO	STCRTU@honeywell.com	
	Bombardier	EASA	10038287REV4	STCRTU@honeywell.com	

Table 3-1-4 – Global Express DU-875 Supplemental Type Certificates

Any questions regarding STCs can be directed to STCRTU@honeywell.com

3.2 Dassault Falcon 900EX/C

Drop-In	Model	Description	Part Number	QTY
	DU-875	8" x 7" LCD Display Unit	K9321060A13	1
	DU-870	CRT Trade-In Credit		1

Table 3-2-1 – Falcon 900EX/C Drop-In

PEEF + PEAFF	Model	Description	Part Number	QTY
	DU-875AF	8" x 7" LCD Display Unit	K9321062A11	5
	DU-870	CRT Trade-In Credit		5
	TRAY	DU-875 Tray	4093594-907	5
	DL-1000	Data Loader	G7228-01	1
	MC-800	MFD Controller	G7280-703 or -701 (video)	2
	SW Kit	Display Unit Modifications (5) to convert DU to K9321062A11	KS60001344-301	1
	SR/SL	OPTION: SmartRunway / SmartLanding kit	6990273-300	1

Table 3-2-2 – Falcon 900EX/C Primus Elite Enhanced Features and Advanced Features (PEEF+PEAF)

NOTES:

OIB 2020-XX DU-875 LCD Display Unit Upgrades - All Platforms

FMS 6.1 is required for PEAFF. Installer must verify if F-900EX/C IAC 1, 2 and 3 are currently at FMS software version 6.1. The following table is provided for reference:

Integrated Avionics Computer (IACs)	FMS 6.1 Dash Number	S/W Kit Required for PEAFF
F-900EX IAC 1 and 2 with FMS 6.1:	-41125 or -41126 or -41127	KS7025350-41128
F-900EX IAC 3 with FMS 6.1	-45125 or -45126 or -45127	KS7025350-45128
F-900EX IAC 3 with no FMS	-45525 or -45526 or -45527	KS7025350-45528
F-900C IAC 1 and 2 with FMS 6.1:	-41125 or -41126 or -41127	KS7025350-41128
F-900C IAC 3 with FMS 6.1	-43125 or -43126 or -43127	KS7025350-43128
F-900C IAC 3 with no FMS	-44025 or -44026 or -44027	KS7025350-44028

If IACs have the above associated dash numbers, then IC-810 software modifications to -4XX28 are included at no-charge. If IAC 1, 2 and 3 are at a version earlier than FMS 6.1, the IC-810s must include FMS 6.1 software price as shown in HSB 2020-11 for modification.

SmartRunway/SmartLanding kit is offered as an option. To receive the special priced upgrade kit must be purchased with the PEEF + PEAFF package as shown above in Table 3-2-2. Ask your Honeywell dealer about this promotion.

An IM-803 configuration module change to PN 7014940-902 is needed to enable PEAFF features. Installer should consult with STC or service bulletin documentation for instructions on how to reconfigure.

PEAFF only			
Model	Description	Part Number	QTY
PEAFF	PEAFF modifications	See below	
DU-875AF	Display Unit Modifications (5) to convert DU to K9321062A11	KS60001344-301	1

Table 3-2-3 – Falcon 900EX/C Primus Elite Advanced Feature Modifications (PEAFF)

NOTES:

FMS 6.1 is required for PEAFF. Installer must verify if F-900EX/C IAC 1, 2 and 3 are currently at FMS software version 6.1. The following table is provided for reference:

Integrated Avionics Computer (IACs)	FMS 6.1 Dash Number	S/W Kit Required for PEAFF
F-900EX IAC 1 and 2 with FMS 6.1:	-41125 or -41126 or -41127	KS7025350-41128
F-900EX IAC 3 with FMS 6.1	-45125 or -45126 or -45127	KS7025350-45128
F-900EX IAC 3 with no FMS	-45525 or -45526 or -45527	KS7025350-45528
F-900C IAC 1 and 2 with FMS 6.1:	-41125 or -41126 or -41127	KS7025350-41128
F-900C IAC 3 with FMS 6.1	-43125 or -43126 or -43127	KS7025350-43128
F-900C IAC 3 with no FMS	-44025 or -44026 or -44027	KS7025350-44028

If IACs have the above associated dash numbers, then IC-810 software modifications to -4XX28 are included at no-charge. If IAC 1, 2 and 3 are at a version earlier than FMS 6.1, the IC-810s must include FMS 6.1 software price as shown in HSB 2020-11 for modification.

The DU-875 heatsink modification was incorporated into production in mid-2014 and is required for Primus Elite Advanced Features. There is no additional price for the mod when done in conjunction with PEAFF. DU-875 part number K9321060A12 REV 00 and K9321060A13 REV 00 are required to go to REV 01, which is the heatsink mod. The operator has two options to add the heatsink mod.

Option 1. Send existing units back to Honeywell for REV 01 modification and have them returned. This option allows operator to keep same serial-numbered units. Average turn time for mod is anticipated to be 30 days and there is no charge for the mod when ordering the PEAFF software upgrade.

Option 2. Request Honeywell SPEX rotatable units with heatsink as exchange for existing non-heatsink units. Operator sends existing cores back to Honeywell and requests SPEX unit replacements. This is available on a first-come, first-serve basis as there are limited units. Please use Honeywell SPEX to place your no-cost order and reference this bulletin. This is a no-charge service when ordering the PEAFF software upgrade.

For units already with heatsink, a software kit (SW Kit) is necessary for the conversion of all DU-875s installed in the aircraft and can be done "on-wing." The software kit is supplied through an online portal managed by ScioTeq (Esterline), Belgium

An IM-803 configuration module change to PN 7014940-902 is needed to enable PEAFF features. Installer should consult with STC or service bulletin documentation for instructions on how to reconfigure.

Falcon 900EX/C Supplemental Type Certificates

Falcon 900EX/C STCs	Dealer	STC Type	STC Number	Point of Contact	Remarks
Drop-In	Pentastar	FAA	ST04194CH	bbridson@pentastaraviation.com	
	Jet Aviation	EASA ANAC	10063016	directsales.bsl@jetaviation.ch	
PEEF	Dassault	FAA/EASA	ST03371NY	aftermarket@falconjet.com	
	Standard Aero	FAA/EASA		brett.ulrici@standardaero.com	
PEAF*	Dassault	FAA	ST03594NY	aftermarket@falconjet.com	
	Dassault	EASA	In development		4Q2019

Table 3-2-5 – Falcon 900EX/C DU-875 Supplemental Type Certificates

* In order to upgrade to F-900EX/C PEAF, the aircraft must be in compliance with the Dassault Primus Elite Enhanced Features (PEEF) STC ST03371NY before applying the Dassault PEAF STC

Any questions regarding STCs can be directed to STCRTU@honeywell.com

3.3 Embraer Legacy 600 / 650

Drop-In	Model	Description	Part Number	QTY
	DU-875*	8" x 7" LCD Display Unit	K9321060A14	1
	DU-870	CRT Trade-In Credit		1

Table 3-3-1 – Embraer Legacy 600 Drop-In

*Honeywell highly recommends pairing the DU-875 Display with the DU-875 tray. This new tray is optimized for the displays. The L600 tray is PN 4093593-901 and is recommended to be installed when removing a DU-870 and replacing with DU-875.

PEEF only	Model	Description	Part Number	QTY
	DU-875	8" x 7" LCD Display Unit	K9321060A12	5
	DU-870	CRT Trade-In Credit		5
	TRAY	DU-875 Tray	4093593-901	5
	DL-1000	Data Loader	G7228-01	1
	MC-800	MFD Controller	G7280-703	2
	SOFTWARE	PE SW for Legacy 600	PESW4-L600650	1

Table 3-3-2 – Embraer Legacy 600 Primus Elite Enhanced Features (PEEF) – Embraer SB

PEEF + PEAFF			
Model	Description	Part Number	QTY
DU-875AF	8" x 7" LCD Display Unit	K9321062A11	5
DU-870	CRT Trade-In Credit		5
TRAY	DU-875 Tray	4093593-901	5
DL-1000	Data Loader	G7228-01	1
MC-800	MFD Controller	G7280-703	2
SW Kit	Display Unit Modifications (5) to convert DU to K9321062A11	KS60001344-301	1
IC-600	IC-600 Ph 15 SW modification	KS7031470-82415, 83415	2
BL-871	Bezel Controller -921 to -971	7014332-971	2
IC-600	Logo Master Plate	7019721-25	1
SR/SL	OPTION: SmartRunway / SmartLanding kit	6990273-300	1

Table 3-3-3 – Embraer Legacy 600 Primus Elite Enhanced Features and Advanced Features (PEEF+PEAF) using either Duncan STC or Embraer SB

NOTES:

SmartRunway/SmartLanding kit is offered as an option. To receive the special priced upgrade kit must be purchased with the PEEF + PEAFF package as shown above in Table 3-1-2. Ask your Honeywell dealer about this promotion.

PEAF only			
Model	Description	Part Number	QTY
PEAF	PEAF modifications	See below	
DU-875AF	Display Unit Modifications (5) to convert DU to K9321062A11	KS60001344-301	1
IC-600	IC-600 Ph 15 SW modification	KS7031470-82415, 83415	2
BL-871	Bezel Controller -921 to -971	7014332-971	2
IC-600	Logo Master Plate	7019721-25	1

Table 3-3-4 – Embraer Legacy 600 Primus Elite Advanced Feature Modifications (PEAF)

NOTES:

The DU-875 heatsink modification was incorporated into production in mid-2014 and is required for Primus Elite Advanced Features. There is no additional price for the mod when done in conjunction with PEAFF. DU-875 part number K9321060A12 REV 00 and K9321060A13 REV 00 are required to go to REV 01, which is the heatsink mod. The operator has two options to add the heatsink mod.

Option 1. Send existing units back to Honeywell for REV 01 modification and have them returned. This option allows operator to keep same serial-numbered units. Average turn time for mod is anticipated to be 30 days and there is no charge for the mod when ordering the PEAFF software upgrade.

Option 2. Request Honeywell SPEX rotatable units with heatsink as exchange for existing non-heatsink units. Operator sends existing cores back to Honeywell and requests SPEX unit replacements. This is available on a first-come, first-serve basis as there are limited units. Please use Honeywell SPEX to place your no-cost order and reference this bulletin. This is a no-charge service when ordering the PEAFF software upgrade.

For units already with heatsink, a software kit (SW Kit) is necessary for the conversion of all DU-875s installed in the aircraft and can be done "on-wing." The software kit is supplied through an online portal managed by ScioTeq (Esterline), Belgium.

PEAF only		
Model	Description	Part Number
PEAF	PEAF modifications	See below*

Table 3-3-5 – Embraer Legacy 650 Primus Elite Advanced Feature Modifications (PEAF)

* Primus Elite Advanced Features (PEAF) service bulletin **SB145LEG-31-0027** via Embraer is now complete for in-service Legacy 600 and 650 operators in 2019 as shown above. Please contact Embraer for pricing and SB availability for adding PEAFF functionality.

Legacy 600 / 650 Supplemental Type Certificates

Embraer Legacy 600/650 STCs*	Dealer	STC Type	Document Number	Point of Contact	Remarks
Drop-In	Duncan	FAA	ST01861WI	mark.winter@duncanaviation.com	ANAC, DGCA STCs also available from Duncan
	Duncan	EASA	10065001	mark.winter@duncanaviation.com	
	Alamo	EASA		info@jetflightservice.com	
PEEF	Duncan	FAA	ST01861WI	mark.winter@duncanaviation.com	
	Duncan	EASA	10065001	mark.winter@duncanaviation.com	
	Embraer	FAA/EASA	SB145LEG-31-0015	luis.colarino@embraer.com.br	
PEAF	Duncan	FAA	ST01861WI	mark.winter@duncanaviation.com	1Q2020 – L600 For Legacy 650 only
	Duncan	EASA	In development		
	Embraer	FAA/EASA	SB145LEG-31-0027	luis.colarino@embraer.com.br	

Table 3-3-6 – Embraer DU-875 Supplemental Type Certificate

*Any questions regarding STCs can be directed to STCRTU@honeywell.com

3.4 Cessna Citation X

Drop-In			
Model	Description	Part Number	QTY
DU-875	8" x 7" LCD Display Unit	K9321060A13	1
DU-870	CRT Trade-In Credit		1

Table 3-4-1 – Cessna Citation X Drop-In

PEEF only			
Model	Description	Part Number	QTY
DU-875	8" x 7" LCD Display Unit	K9321060A13	5
DU-870	CRT Trade-In Credit		5
TRAY	DU-875 Tray	4093594-904/-907	5
DL-1000	Data Loader	G7228-01	1
SOFTWARE	PE SW for Citation X	PESW4-CX	1

Table 3-4-2 – Cessna Citaton X Primus Elite Enhanced Features (PEEF)

PEEF + PEAFF			
Model	Description	Part Number	QTY
DU-875AF	8" x 7" LCD Display Unit	K9321062A12	5
DU-870	CRT Trade-In Credit		5
TRAY	DU-875 Tray	4093594-904/-907	5
DL-1000	Data Loader	G7228-01	1
SW Kit	Display Unit Modifications (5) to convert DU to K9321062A12	KS60001344-3XX	1
SR/SL	OPTION: SmartRunway / SmartLanding kit	6990273-300	1

Table 3-4-3 – Cessna Citation X Primus Elite Enhanced Features and Advanced Features (PEEF+PEAF)

NOTES:

SmartRunway/SmartLanding kit is offered as an option. To receive the special priced upgrade kit must be purchased with the PEEF + PEAFF package as shown above in Table 3-1-2. Ask your Honeywell dealer about this promotion.

An IM-803 configuration module change to PN 7014940-901 is needed to enable PEAFF features. Installer should consult with STC or service bulletin documentation for instructions on how to reconfigure.

IC-800 IAC software change will also be required. The new part number is 7017300-TBD and will be available upon completion of the STC in mid-2020.

PEAFF only			
Model	Description	Part Number	QTY
PEAFF	PEAFF modifications	See below	
DU-875AF	Display Unit Modifications (5) to convert DU tk9321062A12	KS60001344-3XX	1

Table 3-4-4 – Cessna Citation X Primus Elite Advanced Feature Modifications (PEAFF)

NOTES:

As of this bulletin issue, the Constant Aviation PEAFF STC is in development. The IC-810 and IM-803 dash numbers will be available once the STC documentation is submitted to the certification authority and will be updated in a bulletin revision.

The DU-875 heatsink modification was incorporated into production in mid-2014 and is required for Primus Elite Advanced Features. There is no additional price for the mod when done in conjunction with PEAFF. DU-875 part number K9321060A12 REV 00 and K9321060A13 REV 00 are required to go to REV 01, which is the heatsink mod. The operator has two options to add the heatsink mod.

Option 1. Send existing units back to Honeywell for REV 01 modification and have them returned. This option allows operator to keep same serial-numbered units. Average turn time for mod is anticipated to be 30 days and there is no charge for the mod when ordering the PEAFF software upgrade.

Option 2. Request Honeywell SPEX rotatable units with heatsink as exchange for existing non-heatsink units. Operator sends existing cores back to Honeywell and requests SPEX unit replacements. This is available on a first-come, first-serve basis as there are limited units. Please use Honeywell SPEX to place your no-cost order and reference this bulletin. This is a no-charge service when ordering the PEAFF software upgrade.

For units already with heatsink, a software kit (SW Kit) is necessary for the conversion of all DU-875s installed in the aircraft and can be done "on-wing." The software kit is supplied through an online portal managed by ScioTeq (Esterline), Belgium.

Citation X STCs*	Dealer	STC Type	STC Number	Point of Contact	Remarks
Drop-In	Pentastar	FAA	ST04194CH	bbridson@pentastaraviation.com	
PEEF	Textron / Cessna	FAA	OEM SB		
	Textron / Cessna	EASA	OEM SB		
PEAF	Constant Aviation	FAA	In development		2Q2020
	Constant Aviation	EASA	In development		3Q2020

Table 3-4-5 – Citation X DU-875 Supplemental Type Certificate

* Any questions regarding STCs can be directed to STCRTU@honeywell.com

3.5 Bombardier Lear 40 / 45

Drop-In			
Model	Description	Part Number	QTY
DU-875	8" x 7" LCD Display Unit	K9321060A14	1
DU-870	CRT Trade-In Credit		1

Table 3-5-1-1 – Lear 40 / 45 Drop-In

Drop-In			
Model	Description	Part Number	QTY
DU-875	8" x 7" LCD Display Unit	K9321060A14	2
DU-870	CRT Trade-In Credit		2
TRAY	DU-875 Tray	4093594-906	2

Table 3-5-1-2 – Lear 40 / 45 Drop-In using Bombardier STC

* DU-875 Two-for-Two Configuration is unique to the Bombardier Lear 40/45 STC requiring DUs to be replaced in pairs (minimum of two per side) or all four. DUs and required trays must be ordered and installed in quantities of two (2) or four (4) per the BAS STC. Contact Bombardier for STC information.

PEEF only			
Model	Description	Part Number	QTY
DU-875*	8" x 7" LCD Display Unit	K9321062A11	4
DU-870	CRT Trade-In Credit		4
TRAY	DU-875 Tray	4093594-906	4
DL-1000	Data Loader	G7228-01	1
SOFTWARE	PE SW for Lear 40/45	PESW4-LEAR4045	1

Table 3-5-2 – Lear 40 / 45 Primus Elite Enhanced Features (PEEF)

PEEF + PEAFF			
Model	Description	Part Number	QTY

OIB 2020-XX DU-875 LCD Display Unit Upgrades - All Platforms

DU-875AF	8" x 7" LCD Display Unit	K9321062A12	4
DU-870	CRT Trade-In Credit		4
TRAY	DU-875 Tray	4093594-906	4
DL-1000	Data Loader	G7228-01	1
SW Kit**	Display Unit Modifications (4) to convert DU to K9321062A11	KS60001344-301	1

Table 3-5-3 – Lear 40 / 45 Primus Elite Enhanced Features and Advanced Features (PEEF+PEAF)

As of this bulletin issue, the Lear 40 / 45 PEAFC is in development. The IC-600 and IM-600 dash numbers will be available once the STC documentation is submitted to the certification authority and will be updated in a bulletin revision.

PEAF only			
Model	Description	Part Number	QTY
PEAF	PEAF modifications	See below	
DU-875AF	Display Unit Modifications (5) to convert DU to K9321062A12	KS60001344-XXX	1

Table 3-5-4 – Lear 40 / 45 Primus Elite Advanced Feature Modifications (PEAF)

As of this bulletin issue, the Lear 40 / 45 PEAFC is in development. The IC-600 and IM-600 dash numbers will be available once the STC documentation is submitted to the certification authority and will be updated in a bulletin revision.

Lear 40 /45 Supplemental Type Certificates

Lear 40 / 45 STCs*	Dealer	STC Type	STC Number	Point of Contact	Remarks
Drop-In	Pentastar	FAA	ST04194CH	bbridson@pentastaraviation.com	Also DGAC, CASA, ANAC
	Jet City	FAA	ST03873NY	travis@jetcity.com.au	
	Jet City	EASA	10059913	travis@jetcity.com.au	
	Bombardier	FAA	ST01842WI		
	Bombardier	EASA	10065104		
PEEF	Jet City	FAA	ST03873NY	travis@jetcity.com.au	Also DGAC (Mexico), CASA, ANAC (Brazil, Argentina)
	Jet City	EASA	10059913	travis@jetcity.com.au	
PEAF	TBD	FAA	In development		3Q2020
	TBD	EASA	In development		3Q2020

Table 3-5-5 – Lear 40 / 45 DU-875 Supplemental Type Certificates

* Any questions regarding STCs can be directed to STCRTU@honeywell.com

3.6 Dornier 328

Drop-In			
Model	Description	Part Number	QTY
DU-875	8" x 7" LCD Display Unit	K9321062A01	1

DU-870	CRT Trade-In Credit		1
--------	---------------------	--	---

Table 3-6-1 – Dornier 328 Drop-In

PEEF only			
Model	Description	Part Number	QTY
DU-875	8" x 7" LCD Display Unit	K9321062A01	5
DU-870	CRT Trade-In Credit		5
TRAY	DU-875 Tray	4093594-906	5
DL-1000	Data Loader	G7228-02	1
MC-800	MFD Controller	G7280-702	2
SOFTWARE	PE SW for Dornier 328	PESW4-DO328	1

Table 3-6-2 – Dornier Primus Elite Enhanced Features (PEEF)

PEEF + PEAFF			
Model	Description	Part Number	QTY
DU-875AF	8" x 7" LCD Display Unit	K9321062A01	5
DU-870	CRT Trade-In Credit		5
TRAY	DU-875 Tray	4093594-906	5
DL-1000	Data Loader	G7228-02	1
MC-800	MFD Controller	G7280-702	2
SW Kit**	Display Unit Modifications (5) to convert DU to K9321062A01	KS60001344-301	1

Table 3-6-3 – Dornier 328 Primus Elite Enhanced Features and Advanced Features (PEEF+PEAF)

NOTES:

In order to upgrade to DU-875 with PEAFF features, aircraft must previously have been upgraded, or needs to upgrade, to FMS 6.2 functionality with GBAS GPS (HG2021GD04).

An IM-803 configuration module change to PN 7014940-902 is needed to enable PEAFF features. Installer should consult with STC or service bulletin documentation for instructions on how to reconfigure.

In order to upgrade to DU-875 with PEAFF features, aircraft must previously have been upgraded, or needs both IC-810s upgraded to PN 7017300-11200 or higher.

A software kit (SW Kit) is necessary to ensure the PEAFF software is accounted for. The SW Kit is required be ordered as part of Table 3-6-3 above regardless of DU 875 part number. If the kit is not needed at time of installation, it can be discarded. The SW Kit is supplied through an online portal managed by ScioTeq (Esterline), Belgium.

PEAFF only			
Model	Description	Part Number	QTY
PEAFF	PEAFF modifications	See below	
DU-875AF**	Verify DU is already K9321062A01	KS60001344-302	1

Table 3-6-4 – Dornier Primus Elite Advanced Feature Modifications (PEAFF)

NOTES:

In order to upgrade to DU-875 with PEAFF features, aircraft must previously have been upgraded, or needs to upgrade, to FMS 6.2 functionality with GBAS GPS (HG2021GD04).

OIB 2020-XX DU-875 LCD Display Unit Upgrades - All Platforms

An IM-803 configuration module change to PN 7014940-902 is needed to enable PEAFF features. Installer should consult with STC or service bulletin documentation for instructions on how to reconfigure.

In order to upgrade to DU-875 with PEAFF features, aircraft must previously have been upgraded, or needs both IC-810s upgraded to PN 7017300-11200 or higher.

A customer software kit is required for the conversion of all DU-875s installed in the aircraft. This software kit is supplied through an online portal managed by ScioTeq (Esterline), Belgium.

Dornier 328 OEM Service Bulletins

Dornier 328 SBs*	Dealer	STC Type	STC Number	Point of Contact	Remarks
Drop-In	328 SSG	FAA	OEM SB	ray.mosses@328.eu	Do 328 Turboprop
	328 SSG	EASA	OEM SB	ray.mosses@328.eu	Do 328 Turboprop
	328 SSG	FAA	OEM SB	ray.mosses@328.eu	Do 328 Jet
	328 SSG	EASA	OEM SB	ray.mosses@328.eu	Do 328 Jet
PEEF	328 SSG	FAA	OEM SB	ray.mosses@328.eu	Do 328 Turboprop
	328 SSG	EASA	OEM SB	ray.mosses@328.eu	Do 328 Turboprop
PEAF	328 SSG	FAA	OEM SB	ray.mosses@328.eu	Do 328 Turboprop
	328 SSG	EASA	OEM SB	ray.mosses@328.eu	Do 328 Turboprop

Table 3-6-5 – Dornier 328 DU-875 Service Bulletin

* Any questions regarding STCs can be directed to STCRTU@honeywell.com

3.7 Cessna Citation 550 / 560 (Bravo, Ultra, Encore, Excel)

Drop-In			
Model	Description	Part Number	QTY
DU-875	8" x 7" LCD Display Unit	K9321060A14	1
DU-870	CRT Trade-In Credit		1

Table 3-7-1 – Citation 550 / 560 Drop-In

PEEF only			
Model	Description	Part Number	QTY
DU-875	8" x 7" LCD Display Unit	K9321062A11	1
DU-870	CRT Trade-In Credit		1
TRAY*	DU-875 Tray	4093594-906	1
DL-1000	Data Loader	G7228-01	1
SOFTWARE*	PE SW for Citation 550/560	PESW4-C550560	1

Table 3-7-2-1 – Citation 550 / 560 Primus Elite Enhanced Features (PEEF) for MFD only

PEEF only			
Model	Description	Part Number	QTY
DU-875	8" x 7" LCD Display Unit	K9321062A11	3

OIB 2020-XX DU-875 LCD Display Unit Upgrades - All Platforms

DU-870*	CRT Trade-In Credit		3
TRAY*	DU-875 Tray	4093594-906	3
DL-1000	Data Loader	G7228-01	1
SOFTWARE*	PE SW for Citation 550/560	PESW4-C550560	1

Table 3-7-2-2 – Citation 550 / 560 Primus Elite Enhanced Features (PEEF) for all three DUs at once

* As of this bulletin issue, the Citation 550/560 PEEF STC is in development. The part numbers for the DU 875, TRAY and “PE SW for Citation 550/560” will be confirmed once the STC documentation is submitted to the certification authority and will be updated in a bulletin revision. The STC will require only the center display (MFD) to be upgraded to DU 875. The two PFDs are optional and will use table 3-7-2-2 as guidance for pricing / part number.

Citation 550 / 560 Supplemental Type Certificates

Citation 550/560 STCs*	Dealer	STC Type	STC Number	Point of Contact	Remarks
Drop-In	Pentastar	FAA	ST04194CH	bbridson@pentastaraviation.com	-
	Jet Aviation	EASA ANAC	10063016	directsales.bsl@jetaviation.ch	
PEEF	Jet City	FAA	In development		2Q2020
	Jet City	EASA	In development		3Q2020
PEAF	Not applicable				

Table 3-7-3 – Citation 550 / 560 DU-875 Supplemental Type Certificates

* Any questions regarding STCs can be directed to STCRTU@honeywell.com

3.8 Primus Elite Options

3.8.1 XM Weather and Sirius XM Weather

Primus Elite			
Model	Description	Part Number	QTY
XMD-157	XM Satellite Receiver	4092743-901	1
XM ANT	XM Satellite Antenna	4092744-901	1
XM INSTALL	XM Satellite Installation Kit	4092757-101	1

Table 3-8-1 – XM Weather Shipset

Primus Elite			
Model	Description	Part Number	QTY
Receiver*	SXM Satellite Receiver	60005280-902	1
XM ANT	XM Satellite Antenna	4092744-901	1
XM INSTALL	XM Satellite Installation Kit	4092757-101	1

Table 3-8-2 – Sirius XM Weather Shipset

* The XM weather service will be transitioning to Sirius XM over the next few years. As of this HSB no date has been given by Sirius when the basic XM service will be terminated. DU 875s will need the latest software TSO and STCs will need to be updated before the new SXM receiver can be installed. Honeywell will continue to ship basic XMD-157 in table 3-8-1 until notification via a special Service Information Letter (SIL).

3.9 Database and Service Requirements Supporting Primus Elite

3.9.1 Charts and Maps

Subscription services providing databases for Charts and Maps, along with the XM satellite service for weather information are required to support full Primus Elite functionality. Complete Navigation and Charts & Maps database subscriptions are available via Honeywell/Jeppesen Integrated Navigation Data Service (INDS). INDS can be reached at:

Within the US: +1-888-309-7555 - Option 1
Outside the US: +1-303-328-6948 - Option 1
On the World Wide Web: www.epicinds.com

Please contact INDS directly for Database Service and Subscription pricing details and ordering information, including current options for Charts & Maps packages.

3.9.2 XM Graphical Weather

XM graphical weather service is provided through Honeywell's Global Data Center (GDC). For pricing and subscription information, contact:

Global Data Center
Telephone: 1-888-634-3330 Option 1
Fax: 1-425-885-8930
Email: gfo@mygdc.com
Web: www.mygdc.com

4. Honeywell Maintenance Service Plan (MSP Avionics)

Honeywell Maintenance Service Plan (MSP Avionics) is a maintenance service plan that offers coverage for your Honeywell Avionics. Choose the plan that best meets your needs. Specially priced plans are also available for fleet operators. Take the uncertainty out of repair and maintenance costs. A fixed-price MSP contract guarantees that your repair bills will not exceed your budget. For more information about MSP, please contact Honeywell at MSPAvionicsSales@Honeywell.com.

4.1 Special MSP Avionics Offer to DU-870 Operators for Extended DU-870 Coverage

Customers enrolled in the Honeywell Maintenance Service Plan have the option to purchase Extended DU-875 coverage. Under this program an unlike exchange from a DU-870 to DU-875 is shipped upon confirmation of failure. This offers operators and maintenance departments an easy-to-budget upgrade upon failure, preventing obsolescence now and still offering a roadmap to additional features such as Charts & Maps and Synthetic Vision.

The cost to enroll in the MSP Avionics program with Extended DU Coverage is \$15 per flight hour per display up to six (6) DU-870s.* All Extended contracts are required to be enrolled for a three-year term. MSP does not cover the cost of the STC. The operator or dealer will need to contact the STC holder to purchase the installation documentation.

* Examples:

1. Lear 40/45 coverage for all four (4) DU-870s: 4 x \$15 = \$60 per flight hour
2. Falcon 900EX/C coverage for all five (5) DU-870s: 5 x \$15 = \$75 per flight hour
3. Global Express coverage for all six (6) DU-870s: 6 x \$15 = \$90 per flight hour

4.2 Special MSP Avionics Offer When Installing One or More DU-875s without Primus Elite

Customers replacing DU-870s by installing one or more new DU-875s are eligible for a \$2,500 MSP discount per DU-875 on a new or extended MSP contract.

4.3 Special MSP Avionics Offer When Replacing all three (3) DU 870s with DU 875s on Citation 550 / 560 models

Citation 550 / 560 operators opting to replace all three (3) DU 870s for new DU 875 display units are eligible for one free year of MSP after installation has been complete, and a \$10,000 discount off years 2 and 3 when signing a three-year contract with Honeywell.

4.4 Special MSP Avionics Offer When Installing full Primus Elite

Customers opting for the Primus Elite upgrade for all display units are eligible for one free year of MSP after installation has been complete, and a \$10,000 discount off years 2 and 3 when signing a three-year contract with Honeywell.

5. Resources:

For additional information on the Primus Elite upgrade please visit: www.honeywellprimuselite.com

6. Contact Information

Honeywell Authorized Service Centers are encouraged to contact their local Honeywell Area Sales Manager if you have any questions regarding this Bulletin or if you need assistance.

Find your nearest Sales contact by visiting our [Direct Access Directory for Business Aviation](#). Click on **Area Sales Managers**.

Or downloading our **Honeywell Direct Access app**:



The Direct Access mobile app launched last year provides business aviation customers quick access to Honeywell Aerospace's technical, business, parts and sales support; the closest dealers and service centers, the Aircraft on Ground (AOG) desk and other valuable resources.

The Direct Access app is free and can be downloaded at the [Apple iTunes](#) and [Google Play](#) stores.

Need immediate support?
[Contact Us](#)

Honeywell reserves the right to rescind or revise this information bulletin at any time, or through future information bulletins.