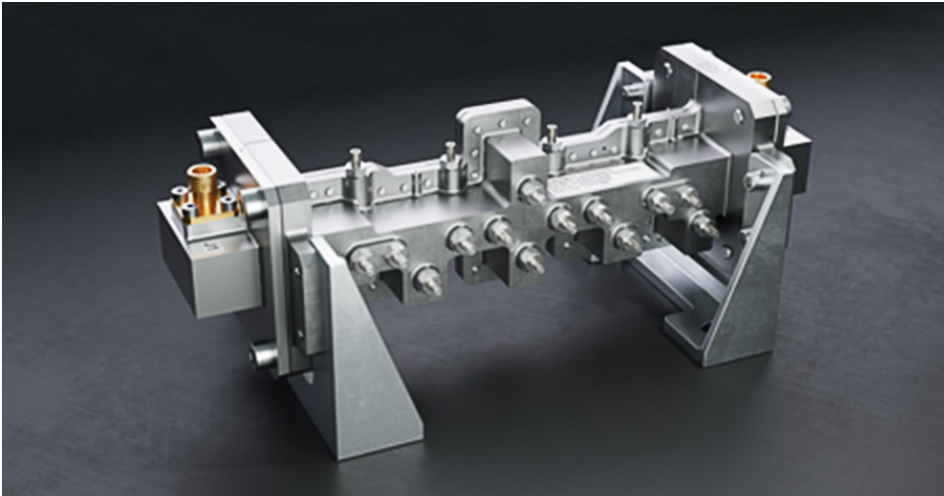


# X BAND DEEP SPACE REJECTION FILTER



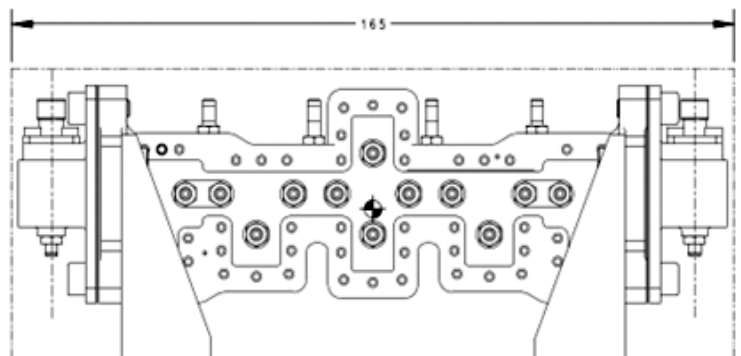
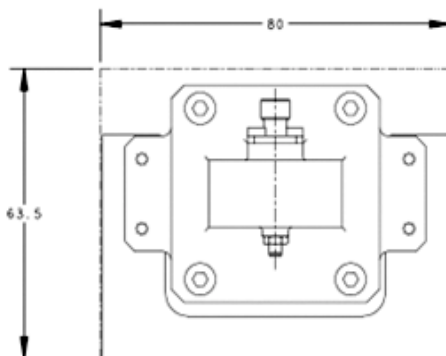
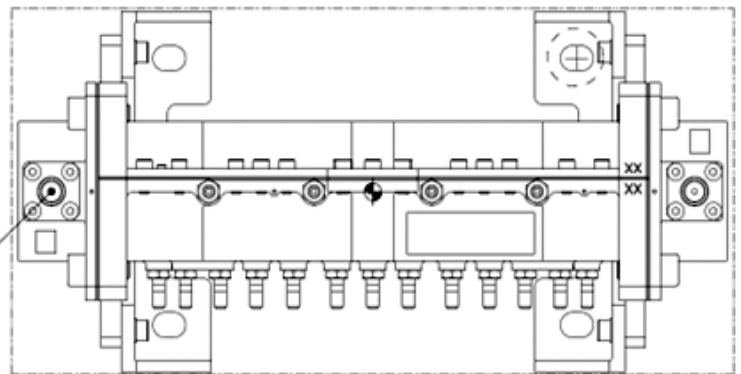
## SPECIFICATIONS

Operating Frequency (GHz)	8.10 – 8.30
Insertion Loss (dB)	0.65 Max
• Center Frequency	1.05 Max
• Operating Frequency	
Return Loss (dB)	22 Min
Rejection (dB)	
• DC to 7.93GHz	70 Min
• 7.93 to 8.05	20 Min
• 8.326 to 8.35	20 Min
• 8.35 to 12.2	70 Min
Interface	SMA-F
Operating Temp	-20 to +80
Mass (g)	615 g

## FEATURES

- High Selectivity
- High Rejection
- Temperature Stable
- Compact size
- Space-flight qualified

2X SMA FEMALE CONNECTOR

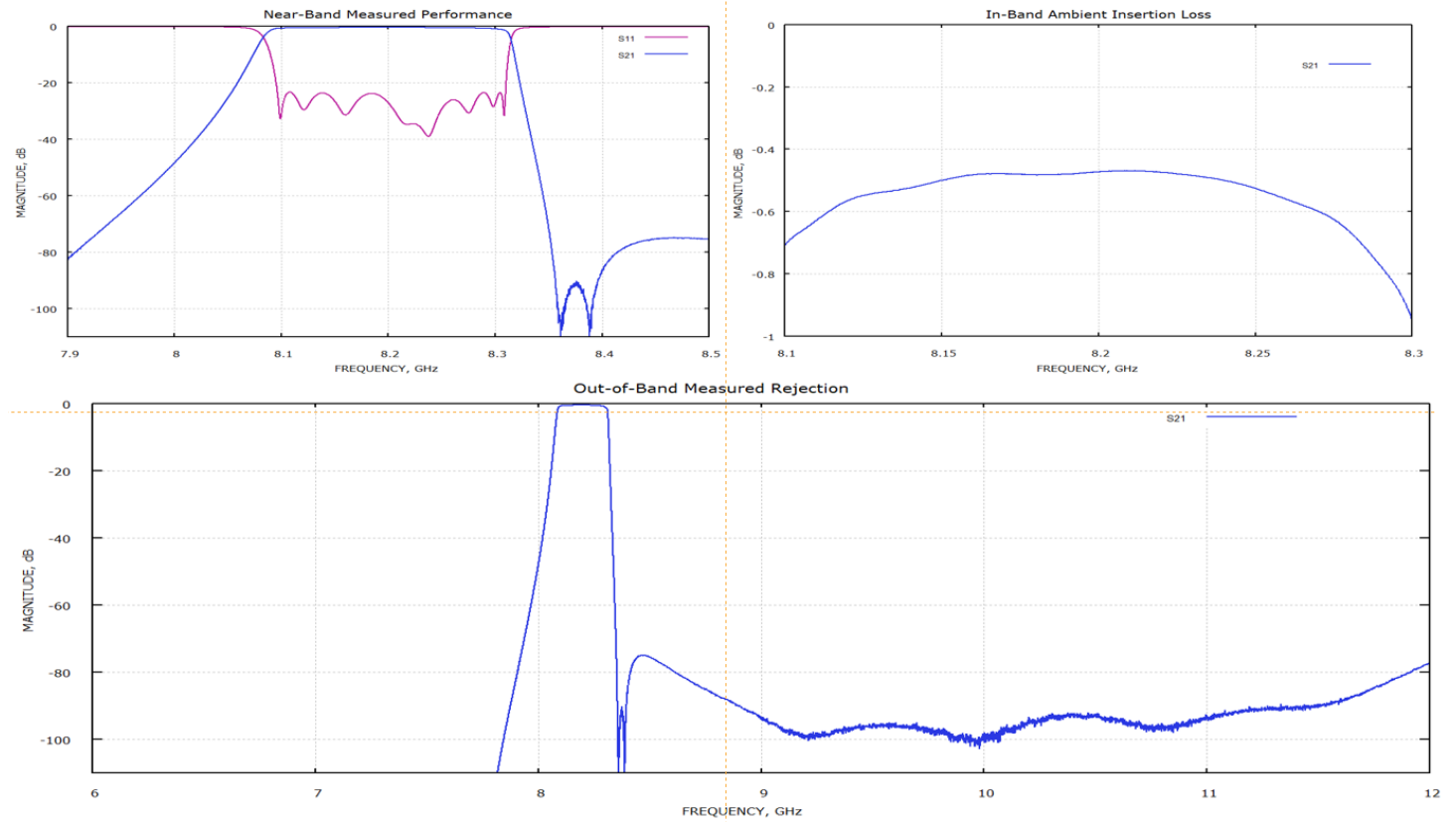


M398A

**Honeywell**

# TYPICAL PERFORMANCE

## M398A



### For more information

To find out more about Honeywell's X Band Deep Space Rejection Filter, please click [here](#).

### Honeywell Aerospace

1944 East Sky Harbor Circle  
Phoenix, AZ 85034  
[aerospace.honeywell.com](http://aerospace.honeywell.com)

N61-3153-000-000 | 03/23  
© 2023 Honeywell International Inc.

THE  
FUTURE  
IS  
WHAT  
WE  
MAKE IT

**Honeywell**